

iSignage™

S24 LED Flex Strip



ATG ELECTRONICS



ATG Electronics® iSignage™ S24 LED Flex Strip is a flexible, cuttable and slim device designed especially for signage lighting and replace conventional neon signs.

iSignage™ S24 adopts high intensity LEDs to operate at 12VDC (safe to humans). It can be joined together via 2-pin power cable, and cut at every 3LEDs to fit different spaces. The slim profile, wide beam angle and small color mixing distance (10cm~15cm or 4"~6") direct the light distribution to the surface of channel letters, and produce even color.

iSignage™ S24 can also be dimmed with specified dimmer (QColor™ Remote Dimmer). Power Supplies are available in normal and waterproof versions for indoor and outdoor signs. One meter (3.3 feet) 2-pin power cable can be provided for cases there is big space between power supply and channel letters.

iSignage™ S24 can be easily installed onto channel letter bottom with mounting clips which has 3M tape on the base.

iSignage™ S24 has been successfully installed to light up thousands of channel letters worldwide; besides it can also be used for cove lighting.

ATG
Electronics Corp.

Light your world
Color your life!

Features & Benefits:

- High brightness with high intensity LEDs at lower cost;
- Flexible, cuttable and compact size for narrow or curving space;
- Easy to install and connect with mounting clips and power connectors;
- Moisture, humidity and short-circuit resistant with tape on the back of PCB;
- Produce even color between strips at the tightest color tolerances;
- Safe and stable with low voltage;
- Energy saving with low power consumption;
- Green and eco-friendly lighting source.

Recommended Applications:

- Signage lighting (channel letter lighting, converse channel lighting, symbol lighting) for shops, stores, hotels, restaurants, cinemas, theatres, bars and clubs etc;
- Decorative lighting (cove lighting, back lighting, edge lighting) for your homes, shops, stores, hotels, restaurants, cinemas, theatres, bars and clubs, etc.

Custom Design Service:

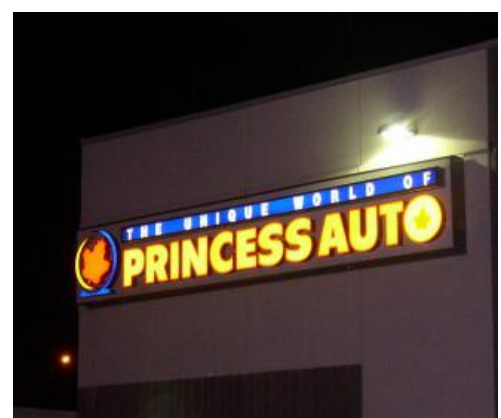
- Colors: red, yellow, blue, green, white, pink, violet etc;
- Length: more or less than 36 cm (14 inch) as per request;
- LED Quantity: more or less than 24 LEDs as per request;
- Working Voltage: 24 VDC available as per request.

iSignage™ S24 for Signage Lighting



Conventional signs are made by neon which are high-voltage input and easy to fragile and break. iSignage™ S24 as a safe and eco-friendly LED lighting device to replace neon.

With the features of easily bended, long life span and high brightness, iSignage™ S24 will make your installation easier, free from maintenance and most importantly, get an ideal expansion effect.



iSignage™ S24 for Decorative Lighting

Compact size, flexible profile and safe working voltage, these features make iSignage™ S24 as an excellent option to decorate many confined spaces in your homes, shops, stores, hotels, restaurants, cinemas, theatres, bars. Back of your television set, under your furniture, in your ceiling or wall cove, the application is only limited by your imagination. Just use the pretty light output to provide a comfortable ambiance.



Part Numbers

Part Number	Description	Unit
HFS-S024R-036400-L1	24LEDs, Red, 12VDC, 36 cm (14 inch)	PCs
HFS-S024Y-036400-L1	24LEDs, Yellow, 12VDC, 36 cm (14 inch)	PCs
HFS-S024B-036400-L1	24LEDs, Blue, 12VDC, 36 cm (14 inch)	PCs
HFS-S024G-036400-L1	24LEDs, Green, 12VDC, 36 cm (14 inch)	PCs
HFS-S024N-036400-L1	24LEDs, Natural White, 12VDC, 36 cm (14 inch)	PCs

Technical Specifications

Physical Specifications

Dimension	L360*W12*H0.8 mm (L14*W0.47*H0.03 inch)
Connectors	2-pin power connector
PCB Type	White Flexible PCB
Work environment	applicable for dry environment

Electrical Specifications

Lighting Source	High Intensity LEDs
LED Quantity	24 LEDs
Operation Voltage	12 VDC
Operation Current	0.16 A
Power Consumption	1.8 W
Maximum series-wound quantity	20 pcs
Operation Temperature	-40 °C~40 °C (-40°F~104°F)
Power Supply	12 VDC QDriver™/XDriver™ LED Power Supply
Control System	QColor™ Remote Dimmer (HCD-00001-000000-RD)

Optical Specifications

Color Range	Red	Yellow	Blue	Green	White
Luminous Intensity (single LED)	300 mcd	310 mcd	350 mcd	800~1000 mcd	800 mcd
Lumens (one pcs)	21.12 lm	20.64 lm	24.96 lm	88.8 lm	84 lm
Efficiency	11.7lm/W	11.46lm/W	13.8lm/W	49.33lm/W	46.66lm/W
Wavelength	620~625	585~590	470~475	515~520	—*
Beam Angle	80 degree				
Lumen Maintenance	>95%@1,000hrs				

* Color Temperature: 5000~6500K



ATG ELECTRONICS

ATG Electronics Corp.

628 Zhangyang Road, Suite 1-21B, Shanghai 200122, CHINA
www.atgelectronics.com E-mail: sales@atgelectronics.com
Phone: +86-21-58350166 Fax: +86-21-58351977

V4.2-080129