



ATG Electronics® iBright™ Flat LED Panel USER GUIDE



PART NUMBER

HCL-FLT8N-0600E0-F1 HCL-FLT8N-0600A0-F1
HCL-FLT8N-0312E0-F1 HCL-FLT8N-0312A0-F1
HCL-FLT8N-0612E0-F1 HCL-FLT8N-0612A0-F1

NOTE

Please read this entire manual to fully understand and safely use this product.

Specifications are subject to change without notice. Please visit www.atgelectronics.com for the most recent user guide versions.

INCLUDED IN THIS BOX

ATG Electronics® iBright™ Flat LED Panel, 1 PCs
User Guide, 1 Set

UNPACKING

- 1) Unpack and carefully examine the product.
- 2) Report any damage and save all packing materials if any part(s) were damaged during shipping.
- 3) Do not attempt to use this apparatus if it is damaged.

INSTALLATION INSTRUCTIONS

- 1) CONSULT A QUALIFIED ELECTRICIAN TO ENSURE CORRECT BRANCH CIRCUIT CONDUCTOR.
- 2) The product should be installed and operated by a qualified electrician or technician in accordance with relevant local codes.
- 3) Risk of electric shock. Ensure that main power source is off when wiring or soldering the sections of the product.

MAINTENANCE

- 1) Disconnect the product from the power supply prior to cleaning.
- 2) Use a dry or slightly moistened cloth for cleaning.
- 3) Never use any chemicals or abrasive materials for cleaning.

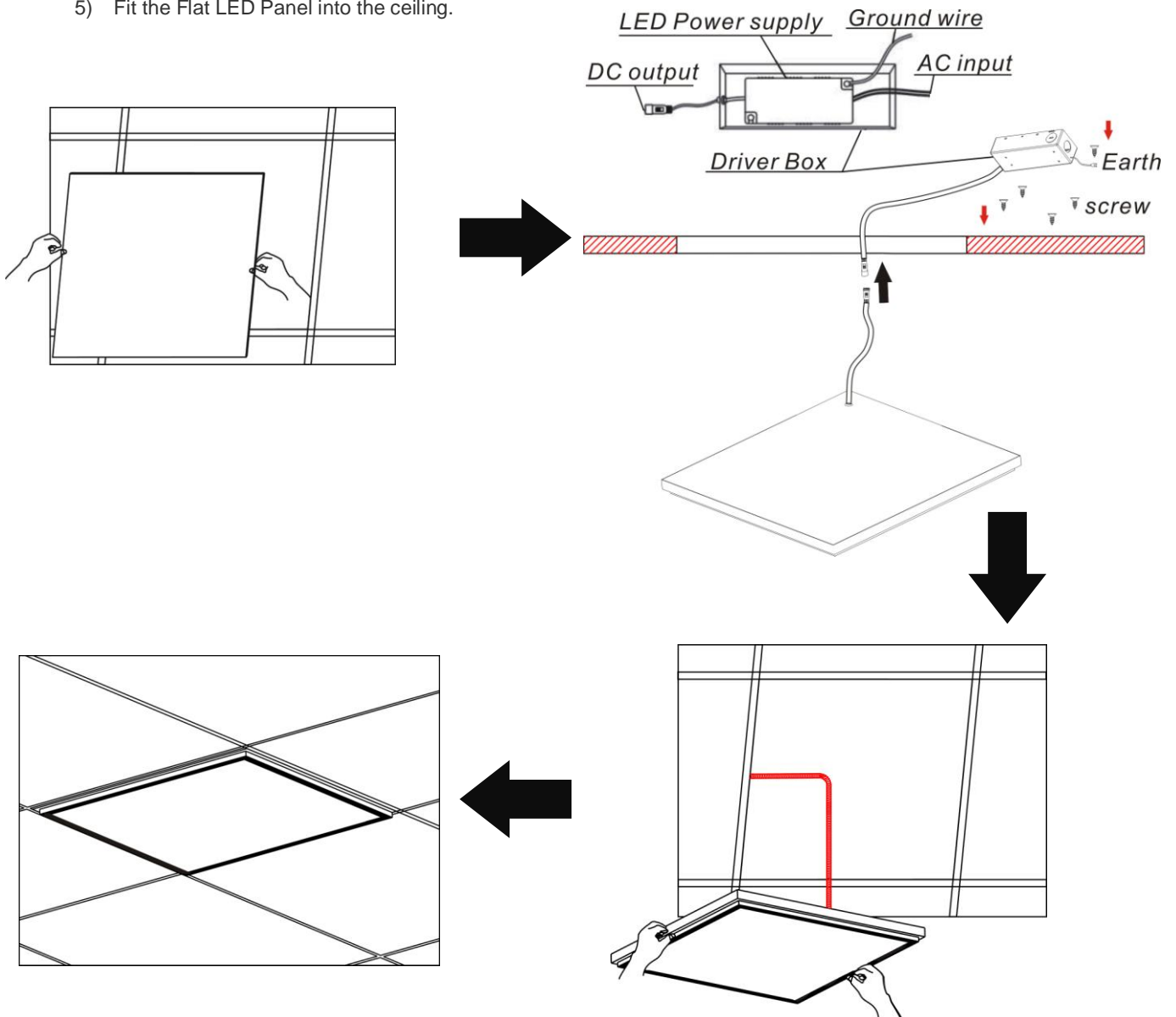
INSTALLATION CONSIDERATIONS

- 1) The product must be AT LEAST 0.2 m distant from any flammable materials.
- 2) The product must not be installed into ceilings or walls that contain heat-insulating materials.

INSTALLATION STEPS

1. Built-in Installation:

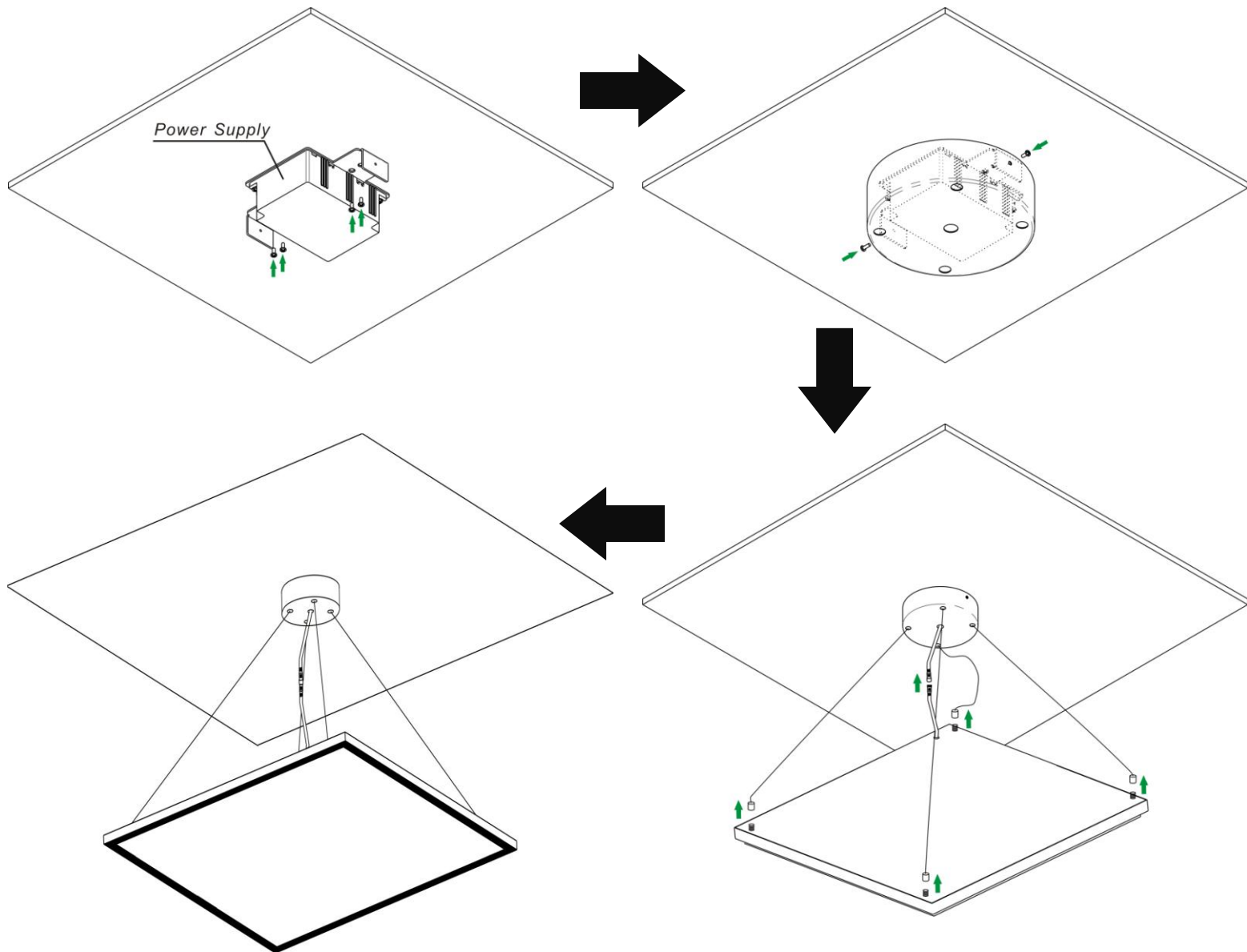
- 1) Turn off main power before installation.
- 2) Remove the ceiling panel.
- 3) Connect the input and ground wires (bare end) of the driver box to the main power outlet.
- 4) Connect the Flat LED Panel to the corresponding connectors on the output wires of the driver box.
- 5) Fit the Flat LED Panel into the ceiling.



2. Suspended Installation:

Accessories for suspended installation are available at an extra charge.

- 1) Turn off the main power before installation.
- 2) Mount the driver base to the ceiling with screws.
- 3) Connect the input and ground wires (bare end) of the driver to the main power outlet.
- 4) Attach the round cover to the base with screws.
- 5) Clamp the connectors of suspended cables to the interfaces of the Flat LED Panel.
- 6) Connect the Flat LED Panel to the corresponding connectors on the output wires of the driver.



ATG Electronics® iBright™ LED Flat Troffer Specifications

		iBright™ 2X2 Flat	iBright™ 1X4 Flat	iBright™ 2X4 Flat
Dimensions	For EU Market	595*595 mm	295*1195 mm	595*1195 mm
	For US Market	603*603 mm	301*1212 mm	603*1212 mm
LED QTY		729	702	1458
Power Consumption		42W±2W	40W±2W	84W±4W
Input Voltage		100-277VAC 50/60 Hz		
Beam Angle		150°		

* For detailed specifications, please refer to the product catalog of iBright™ Flat LED Troffer.

628 Zhangyang Road, Suite 1-21B
 Shanghai 200122, CHINA
 www.atgelectronics.com
 E-mail: sales@atgelectronics.com
 Phone: +86-21-58350166
 Fax: +86-21-58351977

